

PMH funding information session

March 2017

Agenda

- Objectives
- Review key points from PMH Funding Submission Template
- Review key points from PMH Funding Overview

Objectives

- Provide a thorough explanation of the PMH funding application process
- Offer clarity around the process
- Learn from you and offer a platform to learn from each other

PMH Funding Submission Template

Patient Medical Home (PMH) Funding Submission

Please e-mail this submission or any related inquiries to your GPSC/Community Liaison, and copy Susan Climie (sclimie@doctorsofbc.ca).

1. General	
Division	
Board Chair / Lead	
Email / Phone	
Board Chair / Lead signature	
CoED	
E-mail / Phone	
CoED signature	
Date	

2. GPSC Goals
<p>The GPSC goals are to:</p> <ul style="list-style-type: none"> • Increase patient access to appropriate, comprehensive, quality primary health care for each community. • Improve support for patients, particularly vulnerable patients, through enhanced and simplified linkages between providers. • Contribute to a more effective, efficient and sustainable health care system that will increase capacity and meet future patient needs. • Retain and attract family doctors and teams working with them in healthy and vibrant work environments.

3. Project or Initiative (name)

PMH Funding Submission

GPSC Goals

- Access
- Linkages
- Sustainable
- Healthy doctors

2. GPSC Goals

The GPSC goals are to:

- Increase patient access to appropriate, comprehensive, quality primary health care for each community.
- Improve support for patients, particularly vulnerable patients, through enhanced and simplified linkages between providers.
- Contribute to a more effective, efficient and sustainable health care system that will increase capacity and meet future patient needs.
- Retain and attract family doctors and teams working with them in healthy and vibrant work environments.

PMH Funding Submission

Project or Initiative: Attributes

- No minimum number of attributes
- GPSC/Community Liaison will be working closely with you

3. Project or Initiative (name)	
Briefly explain your initiative and identify the specific attributes of PMH the division and its partners will address (<i>for reference the PMH attributes and definitions are included in the Overview document</i>).	
Briefly describe how your division/partnership envisions contributing to the GPSC's goals.	

PMH Funding Submission

Initiative: Community Profile/Data Gathering

- Objective: Determine planning and assessment regarding:
 - Practice-level work
 - Networks and community
 - Alignment with streams 1 & 2 from the original MoH model

PMH Funding Submission

Community Data: the different pieces



PMH Funding Submission

Community Data: the different pieces

Output:
Primary Care
Capacity, Available
Acute and
Specialized
Services and
Public &
Population Health
Information



PMH Funding Submission

Community Data: the different pieces



Output:
Physician, practice and panel composition & structure.
Understanding on definition and value of PMH attributes, etc.

PMH Funding Submission

Community Data: the different pieces



Output:
Population composition and location, Available Community services; Social determinants of Health and Patient Journey and barriers (mapping)

PMH Funding Submission

Initiative: Community Profile/Data Gathering

- Type of Information DoFP may focus on:
 - Existing community profiles – various sources
 - Physician profiles in community – Physician Surveys
 - Patient panel and Practice readiness – PSP
Assessment tools and Physician Surveys
 - Community Asset mapping for services and networks
– various sources
 - Patient journey mapping

PMH Funding Submission

Project or Initiative: Practice Supports

Learning Modules

- Comprehensive learning with emphasis on quality improvement (QI) and applying learning in practice (three classroom sessions & in-practice implementation support) Adult Mental Health – Child & Youth MH – CDM – End of Life – Chronic Pain – MSK – Shared Care COPD & HF – Advanced Access – Group Medical Visits

Small Group Learning Session

- Targeted learning opportunities with emphasis on QI and applying learning in practice; shortened (2-2.5 hr) sessions with practice coaching support. Topics upcoming include Quality Improvement, Dementia Care, Team Based Care, and Patient Self-Management

PMH Funding Submission

Project or Initiative: Practice Supports

In-Practice Support

- 1:1 Coaching - Working with family doctors to make meaningful improvements in their practice
- Peer Mentoring - An opportunity for family practices to enhance skills on areas such as EMR use, clinical topics, office workflow, etc.

PMH Funding Submission

Project or Initiative: Practice Supports

PMH Practice Assessment

- Designed to help doctors consider where they are at in with the 12 attributes of the PMH model; outcomes can help doctors identify areas where practice support would be helpful
- Currently refining and testing with numerous practices and divisions across the province
- Will be provincially available April 1, 2017

PMH Funding Submission

Project or Initiative: Requirements

- Other enablers
 - good partnerships with stakeholders (HA, a municipality)
 - legal issues re MOU's.
 - privacy issues and data sharing

Briefly outline other enablers or resource requirements your division would need to meet your PMH goals.

PMH Funding Submission

Budget: Evaluation

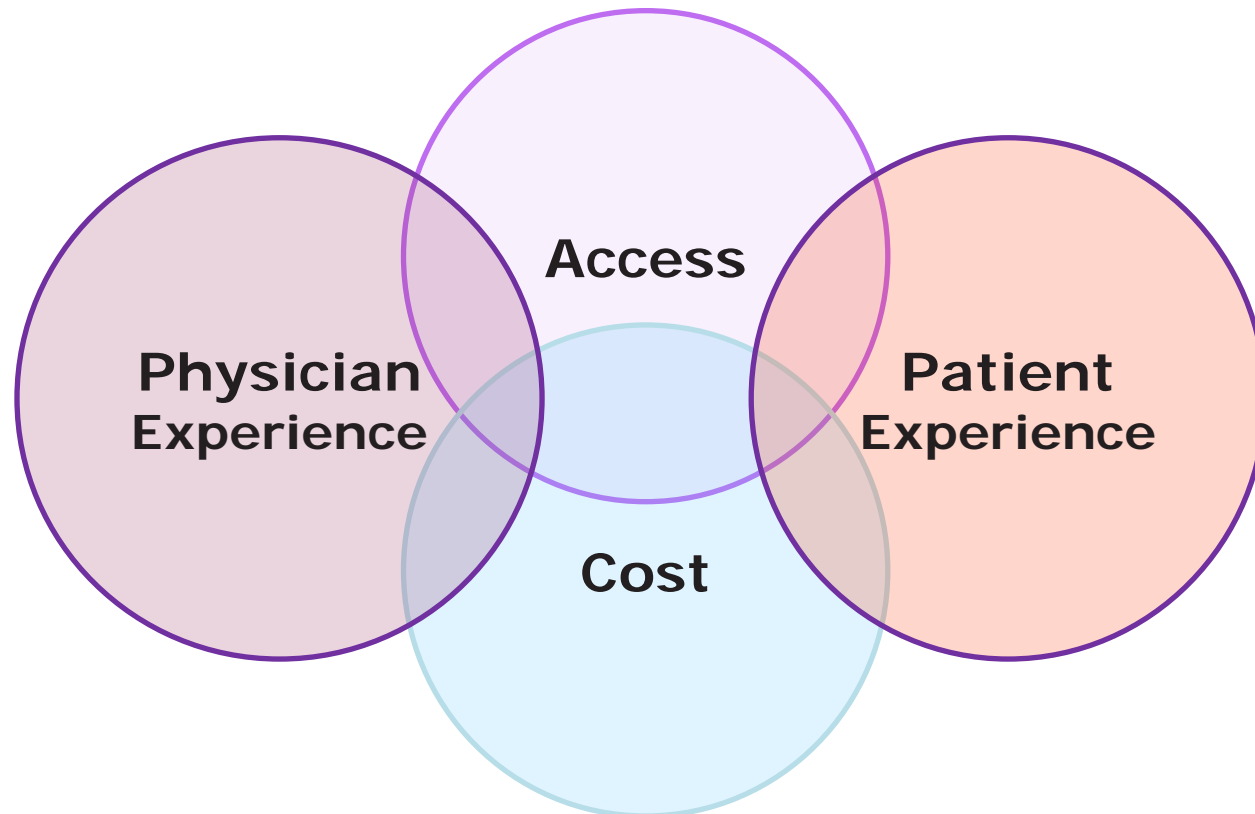
- Consultations
- Features
 - Simple (4 outcome areas; small number of measures)
 - Fast (available early in 2017)
 - Centrally supported

4. Budget

In the template below, each expense category has examples of line items. Please provide a detailed breakdown of the proposed budget for three fiscal years as shown. It is not necessary to allocate the funds across the three time periods; Please allocate based on a best estimate of need.

Expenses	Fiscal 2016/17	Fiscal 2017/18	Fiscal 2018/19
Administration (maximum 20%) Staffing or project overhead. Please note the	\$	\$	\$

PMH Funding Submission Evaluation Framework



PMH Funding Submission Evaluation: Framework Snapshot

Primary Methods	Required Contribution from Divisions
1. Most Significant Change (qualitative)	Light
2. Case studies (mixed methods)	Moderate
3. Physician Survey (~12 questions) (quantitative)	Light/Moderate
4. The GPSC has asked for a small set of progress indicators to be developed to track the progress of implementing the Patient Medical Home model	Moderate
5. Patient Survey (quantitative)	None
6. Administrative health data (quantitative)	None



Required contribution from divisions



No division contribution required



In development

PMH Funding Submission

Evaluation: Central Support & Resources

1. The Most Significant Change

- **Required contribution from Divisions:** Divisions will work with central supports to develop a **small number** of patient and physician stories
- **Central Support/Resources:** Story collectors/interviewers will be hired centrally and will visit each division to do story collection. For divisions who wish to collect stories using their own staff or consultants, additional funding will be available. Sessionals and travel expenses covered.

PMH Funding Submission

Evaluation: Central Support & Resources

2. Case studies

- **Required contribution from Divisions:** Each division will participate in 1 case study. Participation in multiple case studies voluntary.
- **Central Support/Resources:** Case study researchers will be hired centrally and will connect each division as required. Time spent by division staff consultants to support case studies will be compensated. Sessionals and travel expenses covered.

PMH Funding Submission

Evaluation: Central Support & Resources

3. Physician Survey

- **Required contribution from Divisions:** Divisions will build on the centrally provided survey platform and add locally relevant questions to the set of core provincial questions. Divisions will develop and implement a plan for collecting responses from members.
- **Central Support/Resources:** The core set of provincial questions will be loaded into an electronic survey platform and made available to each division. Reasonable expenses, such as sessionals, will be reimbursed to help divisions collect responses from members. Divisions can earmark a portion of their PMH budget to cover administrative costs associated with collecting responses from members.

PMH Funding Submission

Evaluation: Central Support & Resources

4. Progress indicators

- **Required contribution from Divisions:** Divisions may be required to report on a small set of quantitative progress indicators.
- **Central Support/Resources:** Central support will be provided where appropriate to share measurements strategies and clarify definitions. It is anticipated that divisions will be able to integrate these reporting activities into their operations and the roles of their staff and contractors. Divisions have the option to earmark up to 10% of their PMH budget to support reporting on progress measures along with any local evaluation work.

PMH Funding Overview

GPSC Patient Medical Home Funding Overview

GPSC Patient Medical Home Vision and Goals

The GPSC is a vehicle for representatives of the Government, the Doctors of BC, and the Society of General Practitioners to work together on matters affecting the provision of services by GPs in British Columbia.

Under this mandate, The GPSC is committed to enabling access to quality primary health care that effectively meets the needs of patients and populations in BC, using the [BC patient medical home](#) (PMH) as the foundation for care delivery, linked with a broader, integrated system of primary and community care.

The GPSC goals are to:

- Increase patient access to appropriate, comprehensive, quality primary health care for each community.
- Improve support for patients, particularly vulnerable patients, through enhanced and simplified linkages between providers.
- Contribute to a more effective, efficient and sustainable health care system that will increase capacity and meet future patient needs.
- Retain and attract family doctors and teams working with them in healthy and vibrant work environments.

Divisions of Family Practice are pivotal to achieving the [GPSC's vision and goals](#) through their support of local physician engagement and leadership, support of their members, and [partnership work](#).

To support divisions with their patient medical home activities, the GPSC has endorsed PMH funding for:

- Engagement, planning, and assessment activities (e.g., physician and partner engagement or physician or community profile assessments).
- One-time projects/ initiatives that engage in new partnerships or approaches to care.

PMH Funding Overview

Central Funding & Resources

- Tomas is your central resource to help identify and gain access to data
- Engagement tools are being developed centrally which can be used to help design an approach

To support divisions with their patient medical home activities, the GPSC has endorsed PMH funding for:

- Engagement, planning, and assessment activities (e.g., physician and partner engagement or physician or community profile assessments).

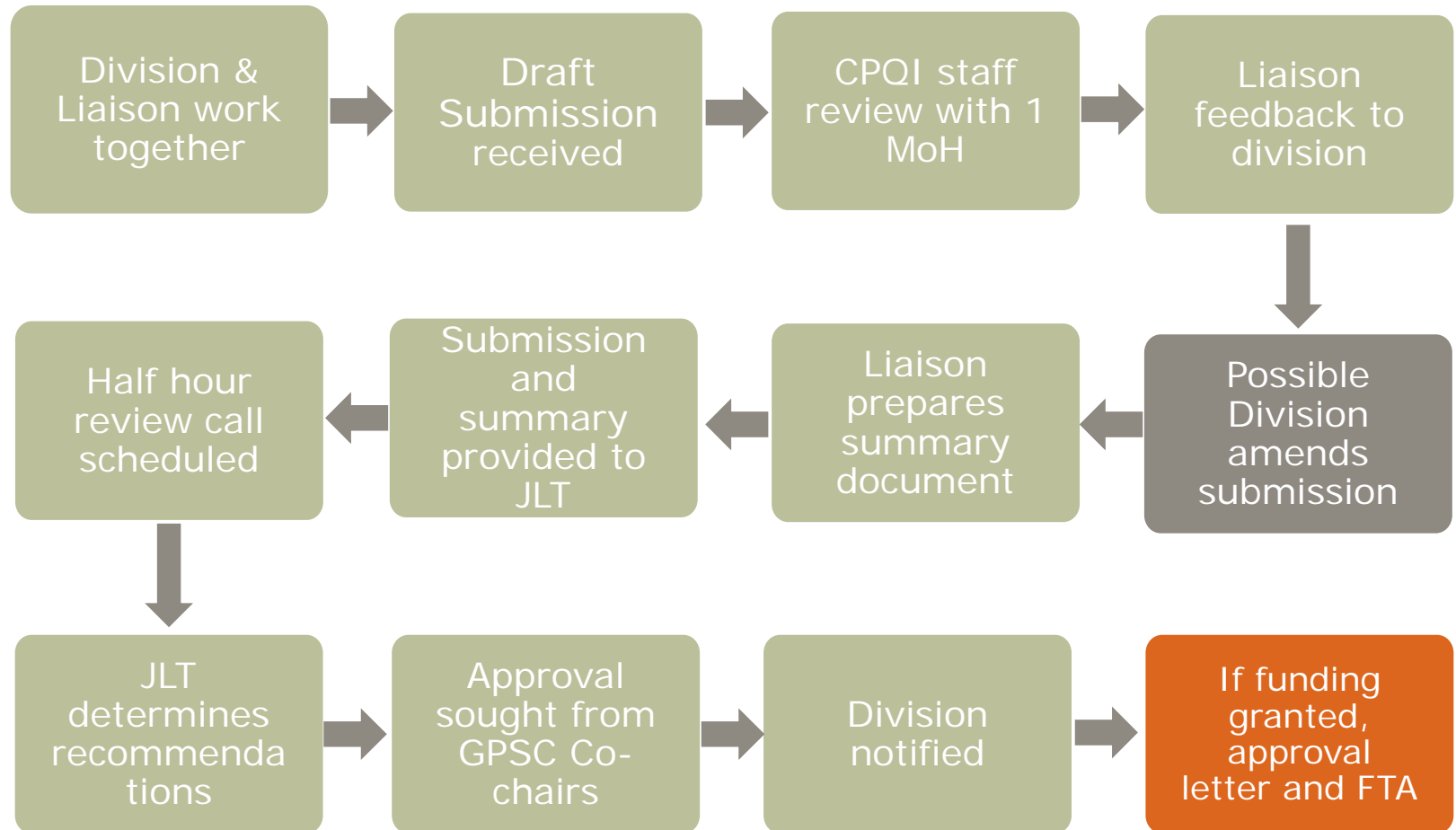
PMH Funding Overview

Central Funding & Resources

Funding may not be used for:

- Duplication or replication of work/projects/supplies where pre-existing funding is allocated or available from partner organizations and/or JCC initiatives.
- Recruitment & retention.
- Direct payment for clinical work of physicians or allied health professionals.
- Cash payouts for breaking current leases.
- Rent or capital improvements.
- Payments for any centralized supports or services.
- Anything prohibited through the division's DOI or Infrastructure FTA.

PMH Funding Overview: Review Process



Questions?

Thank you